

Float & Board Level Gauges



Features

- Float and Board gauge applicable upto 50 kg and upto 400 deg cent
- NACE, H2S service compatibility applicable
- Applicable for refinery, petrochemical, chemical, power, radioactive, fertilizer, food, pharma, metal industry applications
- Options with switch version available

Concept and Principle of operation

General Float and Board Type level Indicator is the version applicable for level indication system in Water, Furnace oil, Chemicals, Acids storage tank level measurement.

Available in two types:

- Guided Type
- Unguided Type



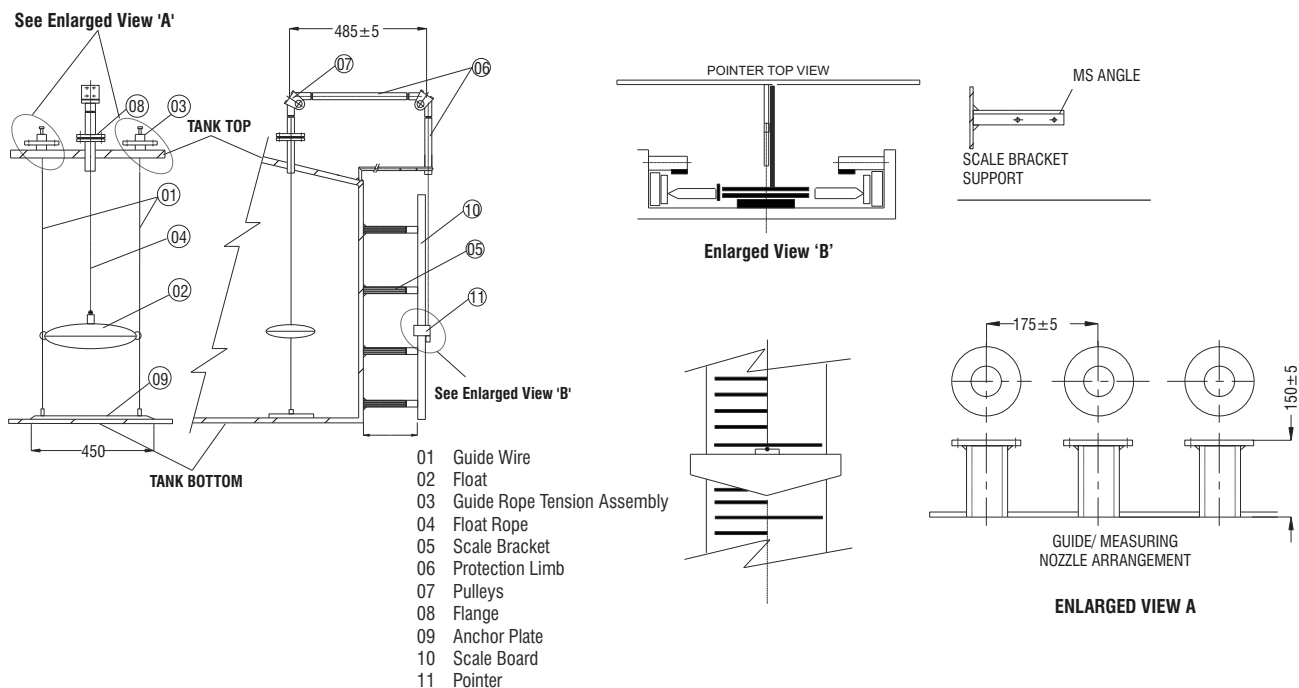
Technical Specifications:

Type of Gauge	"Guided type ----- FBI/G Unguided type ----- FBI/U"
Mounting	Top
Pressure	Upto 50 kg/cm ²
Temperature	Upto 400°C
Measuring range	Max. upto 15000mm ----- For Guided type Max. upto 5000mm ----- For Unguided type
MOC of Float	SS316, SS316L, PP, PTFE, Monel, Titanium, Alloy 20
MOC of Wire	SS316, SS316L, SS304L, PTFE, PP
Accuracy	5%
Calibrated Gauge Board	6" wide, Aluminium white powder coating with black graduation
Least Count	10-25mm
Process Connection	Flanged
Optional	With switch version available

Float & Board Level Gauges



G A Drawing Applicable



Ordering Information

FBLG GT-XD-WS-F03-ZE-Z

Type	
GT	Guided Type
UT	Unguided Type

MOC of Float	
XD	SS316
XE	SS316L
XF	PP
XH	Monel 500
XI	Titanium
XK	Hastelloy C

MOC of Wire	
WQ	SS304
WR	SS304L
WS	SS316
WT	SS316L
WU	PP

Range	
XX	Please Specify
Z	NIL

MOC of Connection	
ZA	CS (A105)
ZB	CS (A106)
ZC	SS 304
ZD	SS 304L
ZE	SS 316
ZF	SS 316L

Process Connection	
Flanged Connection	
F01	1/2", 150# RF
F02	3/4", 150# RF
F03	1", 150# RF
F04	1.5", 150# RF
F05	2", 150# RF
F09	1/2", 300# RF
F10	3/4", 300# RF
F11	1", 300# RF
F12	1.5", 300# RF
F13	2", 300# RF